

By ORDER OF OWNER

# PUBLIC AUCTION

## WEDNESDAY, SEPTEMBER 10 • 11:00 AM

4800 AZUSA CANYON RD., IRWINDALE, CA

PREVIEW: TUESDAY, SEPTEMBER 9, 9-4 & MORNING OF SALE

# Late Model Trucks & Trailers ■ CWIKRAY, INC.



1997 PETERBILT CONVENTIONAL



1985 PETERBILT CABOVER



53' FLAT TRAILER



1988 ALLOY ROLLER VAN TRAILER

**TRUCKS:** 1992 VOLVO Cabover, CUMMINGS Engine, Air Brakes, Alum. Wheels, Vin #4V1MDDJF0NN650121; 1998 PETERBILT Conventional, CUMMINGS Engine, Air Brakes, Alum. Wheels, 13 Spd., Slp. Cab, Vin #1XPFDG9X5WD444685; 1985 PETERBILT Cabover, CUMMINGS Engine, Air Brakes, Alum. Wheels, 9 Spd., Day Cab, Vin #1XP6D29X4FN185786; (2) 1997 PETERBILT Conventional, CUMMINGS Engines, Air Brakes, Alum. Wheels, 13 Spd., Slp. Cabs, Vin #'s 1XPFD68XXVD436453 & 1XPFD68X1VD436454 • **AIR BRAKE TRAILERS:** 1977 TRAILMOBILE, 45' 2-Axle Flatbed, Vin #P50478; 1977 UTILITY 53' 2-Axle Roller Van Trailer, Vin #7L70230003; 1981 ALLOY 57' 2-Axle Roller Van Trailer, Vin #7L14190001; 1981 UTILITY 48' 2-Axle Dry Van Trailer, Vin #1H2Y04823EC018900; 1983 UTILITY 50' 2-Axle Flatbed, Vin #1UYFS2508DC871601; 1983 UTILITY 53' 2-Axle Roller Van Trailer, Vin #1UYUS2536DU967002; (2) 1984 ALLOY 57' 2-Axle Roller Van Trailers, Vin #'s 1ALSPO288ES084120, 1ALSPO281ES084119; 1985 ALLOY 53' 2-Axle Dry Van Trailers, Vin #'s 1ALSPO284FS085296; 1987 ALLOY 57' 2-Axle Dry Van Trailers, Vin #ALSPO289HS870142; (2) 1985 ALLOY 57' 2-Axle Dry Van Trailers, Vin #'s 1ALSPO283FS851081, ALSPO28XFS08586742; (2) 1987 ALLOY 57' 2-Axle Roller Van Trailer, Vin #'s 1ALSPO281HS870975, 1ALSPO28XHS870974; (2) 1987 TRAILMOBILE 48' 2-Axle Dry Van Trailers, Vin #'s 1PT02DAH7H9009145, 1PT02DAH8H9001250; (3) 1988 ALLOY 57' 3-Axle Roller Van Trailers, Vin #'s 1ALSP0380JS880577, 1ALSP0389JS880576, #1ALSP0386JS881457; (3) 1992 ALLOY 53' 3-Axle Flatbed, w/Lift Axle Vin #'s 1ALSFO384NS920202, 1ALSFO383NS920207, 1ALSFO382NS920201; (2) 1996 ALLOY 53' 2-Axle Alum Trailers, Vin #'s 1ALSFO280TS961828, 1ALSFO289TS961827; (2) 20' Storage Trailers • **MOBILE OFFICES:** 1984 CATOLAC Commercial Coach 12'x60'; Vin #4841260S10499; 1978 ADSPA Commercial Coach 12'x48', Vin #S2845 • **FORKLIFTS:** 5000 Lb. KOMATSU, 146", A/T, LPG; 5000 Lb. KOMATSU, 156" A/T, LPG; 5000 Lb. MITSUBISHI, 146", LPG, 3000 Lb. MITSUBISHI, 146", LPG.; HYSTER 2500 Lb. & Much More!



Sale Conducted by:

### CMA Auction Services

40 E. Verdugo Ave., Burbank, CA 91502

(818) 972-5353 • (800) 541-2622., Ext. 153 • [www.cmaauctions.com](http://www.cmaauctions.com)

CMA Bond #5S100845181BC02

**Directions From Downtown L.A.:** Take the 110 N. to the 101 S. to the I-10 E. (toward San Bernardino). Exit Vincent & Go North. Turn Left on San Bernardino Rd. Turn Right on Azusa Canyon Rd. Watch for Auction Signs.

**Terms:** Cash, Cashier's Check, Company Checks w/Letter of Guarantee, \$500 (Cash Only) Refundable Entrance Deposit. 10% Buyers Premium. Some Assets Subject to Prior Sale.

By ORDER OF OWNER

# PUBLIC AUCTION

WEDNESDAY, SEPTEMBER 10 • 11:00 AM

4800 AZUSA CANYON RD., IRWINDALE, CA

PREVIEW: TUESDAY, SEPTEMBER 9, 9-4 & MORNING OF SALE

## Late Model Trucks & Trailers ■ CWIKRAY, INC.



1997 PETERBILT CONVENTIONAL



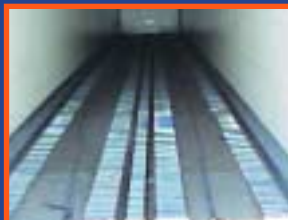
1992 VOLVO CABOVER



53'-57' TRAILERS



HYSTER FORKLIFT



VIEW OF TRUCK ROLLER FLOOR



VIEW OF MOBILE OFFICES

CMA Auction Services  
40 East Verdugo Avenue  
Burbank, CA 91502-1931



Sale Conducted by:

**CMA** Auction Services

[www.cmaauctions.com](http://www.cmaauctions.com)

(818) 972-5353 • (800) 541-2622. Ext. 153