

PUBLIC AUCTION

OWNER RETIRING

AC Smith Electric

Auction: THURSDAY, MAY 18TH AT 10:30AM

Location: 5050 Arrow Highway, Montclair, CA

Preview: Wednesday, May 17th, 9am-4pm & Morning of Sale

ELECTRICAL CONTRACTOR

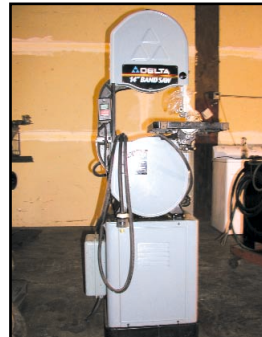
Greenlee 1813 Bending Table • **Greenlee** 1805 Protractor • **Greenlee** 960SAPS Hydraulic Power Pump • **Greenlee** 881CT Hydraulic One Shot Power Bender • **Greenlee** 855 Table Top Bender 1/2"-2" • **Greenlee** 7310 Knockout Punch Driver Set • 1979 **Ford** F350 1-Ton Service Truck • **Ford** Super Duty w/Service Truck Rack & Bins • 1952 **Chevy** Flatbed Truck w/Pelican Bucket Lift • Scissor Lift 750 Lb. Cap • **Baker** Forklift 4000 Lb. Cap LPG • Rolling Carts • Assorted Wire Carts • Assorted Aluminum Ladders 6'-10' • Extension Ladder • **Hobart MIG** Welder 500 AMP • **Stow** Concrete Cutter • Vacuum Pack Machine • **Wacker** 2-Cycle Compantor • **Rigid** 535 Pipe Threader • **Grizzly** Table Saw • **Delta** Table Saw • **Delta** 14" Band Saw • **SSC** Panel Saw • **Towable** 5 HP Abrasive Saw • **Universal** 111PDC Sand Blaster W/Bag House • **American Machine Tool** Horizontal Band Saw • (3) Jointers • **Ampak** Vacuum Packaging Machine • **Generac** Portable Generator • **Delta** Compressor 5 HP, 60 Gal. • **Curtis** Compressor 5 HP, 80 Gal. • **Ingersoll Rand** Compressor 6-1/2 HP, 80 Gal., 2 Stage • (2) **Square D** Variable Frequency Drives • Industrial Drill Press • Assorted Motors 3-50 HP: Baldor, Westinghouse, Reliance, US • (2) **Chicago** Pneumatic Air Drills • **Central** Pneumatic Sand Blaster • Power Head w/Pipe Dies • Vacuum Packing Supplies • Pallet Jacks • 50' x 35' **HD** Mezzanine w/1/4 In Decking, Staircase & Landing • **Werner** 4250 32-1/2ft Folding Scaffolding w/Safety Ouriggers • (3) Conduit Racks • Complete Electricians Warehouse: Manufacturer: **Allen Bradley, Hammer, SQD, Hubbell, Westinghouse, Seimens, GE, ITE, Challenger** • Transformers .75 KVA-75 KVA • Assorted **THHN, Stranded, Solid, Romex** Wire From 18 Gauge Up To #6 • Assorted Wire Mold Fittings • Assorted **PVC** Fittings • Assorted Conduit: **PVC, EMT, Rigid** • **Knaack** Storage Box • Pallet Racking • Metal Shelving • Wheel Barrows • Assorted Hand Tools • Cement Mixers • Auger Bits • Manual Benders • Tri-Vices • Safety Equipment: Barricades, Cones • Assorted Office Furniture • (2) Vending Machines • **Whirlpool** Washer & Dryer and More!



Ford Service Truck



Greenlee 881CT Bender



Delta Band Saw



Hobart Mig Welder



Greenlee 855 Bender



40 E. Verdugo Ave., Burbank, CA 91502
(818) 972-5353 • (800) 541-2622, Ext. 153
www.cmaauctions.com

DIRECTIONS TO SALE: From Downtown Los Angeles, take the 10 Freeway East and Exit on Monte Vista. Go Left to Arrow Highway and turn Right. Sale site is 1/2 block on left side. Look for Auction Signs.

TERMS: \$300 (CASH) refundable deposit required to bid. 10% Buyer's premium will apply. Payment Methods: cash, cashier's check or wire transfer only. No personal or company checks. Winning bidder must pay in full within 48 hours.

PUBLIC AUCTION

OWNER RETIRING

AC Smith Electric

Auction: THURSDAY, MAY 18TH AT 10:30AM

Location: 5050 Arrow Highway, Montclair, CA

Preview: Wednesday, May 17th, 9am-4pm & Morning of Sale



Greenlee 881CT Bender



Band Saw



Ford Service Truck

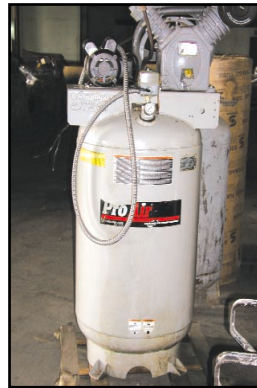
ELECTRICAL CONTRACTOR



P5021646



Ridgid 535 Pipe Threader



Ingersoll Rand Compressor

CMA AUCTION SERVICES

40 East Verdugo Avenue
Burbank, CA 91502-1931

Sale Conducted by:
CMA Auction Services
www.cmaauctions.com